



OMEEO REGION NEWS SHEET

SUPPORTED BY



Wednesday 9 October 2024

AN OMEOSHIRE LIONS CLUB PROJECT

20 Cents

SERVING ENSAY, SWIFTS CREEK, OMEEO. BENAMBRA, DINNER PLAIN.

NEWSHEET ENQUIRIES:

Email: newsheet@omeeo.org.au
Phone : 5159 1515 www.omeeo.org.au
Post: P.O. Box 182 Omeo 3898

Medical Services-Omeo Region

For **URGENT** Medical Care call **000**

Omeo Medical Centre

Please Phone: **51 590 140**

To arrange an appointment

Monday to Friday 8.00am—5.00pm

Pathology: Collection Monday to Friday

8.00 am—9.00am

by appointment only

OMEEO COMMUNITY HUB

LUCKY NUMBERS

26. Missy Morgan ..

41. Leonie & Pat (Bakery)

SNAPDRAGONS JOKE

Welcome to Daylight Saving



Omeo Weather



Wed 18-4. Thurs 21-4. Frid 18-3, Sat 17-1
Sun 19-6. Mon 18-3. Tues 17-4. Wed 21-10

District Diary

Wednesday 9th October

Omeo to Bright Bus..departs Omeo 8.00am return 3.20pm

Lego Club Omeo Library.....3.30pm-4.30pm

Swifts Creek Bush Nurse A.G.M. 5.30pm

Thursday 10th October

Omeo Opportunity Shop Open..... 11.00am-3.00pm

Omeo Service Centre – **Closed.....9:00am – 5:00pm**

Friday 11th October

Omeo to Bright Bus...departs Omeo 8.00am return 3.20pm

School Holiday Movie Omeo Library.....2.00pm-4.00pm

Saturday 12th October

AA. meeting 1st Saturday of month, CFA rooms2.00pm

Omeo Opportunity Shop Open..... 11.00am-3.00pm

Sunday 13th October

Anglican Church Benambra9.30 am

Catholic Prayer Meeting Omeo..... 9.00am

Winter Golf Comp12.00pm

Monday 14th October

Omeo to Bright Bus depart....Omeo 8.00am return 3.20pm

The High Country Singers Omeo Shire Offices.....2-3.30 pm

Tuesday 15th October

Listen with Lorna live radio O.S.C.A.R. fm ... 12.00-2.00pm

Monthly Movie Screening Omeo Library ...2.00pm—4.00pm

NB. Never go to a doctor whose office plants have died

Amicus.



Medical Centre

Charles Luiz & Howard Goldenberg

Please note some days are via telehealth

Phone:5159 0140



Darren Chester
Federal Member for Gippsland



**Shopping
Locally**

Creates Local Jobs
#lovegippsland

1300 131 785

www.darrenchester.com



186 Day Avenue. Omeo. 3898

PH: 03 51591663

FAX: 03 5159 1686

AFTER HOURS: 0474 017 705

EMAIL: omeopharmacy@gmail.com

DELIVERY AVAILABLE

R.E.C. 17886
MITCHELL
Electrical Services

**INDUSTRIAL — DOMESTIC
ELECTRICAL MOTOR REPAIRS**

CONTACT: TOM MITCHELL

5157 3200 — 0428 573 205

"From The Lakes To The Alps"



UNITING CHURCH

AUSTRALIA SWIFTS CREEK

We gather on the **first Sunday of the month**
at 10 am for Worship
and morning tea afterwards.

All are welcome

Activities for the younger ones
Enquiries to Rev Marian Bisset

Ph: 0421 067 212

GARY'S TREE LOPPING

- Tree Lopping
- Stump Grinding
- Hedge Trimming



PH 0427 772 364

garysmaintenance@gmail.com

Skicom Mt Hotham

CARPET/UPHOLSTERY/MATTRESS CLEANING SERVICE

Scott DeVries

0429 723 274

scottdevries2@icloud.com



STUBBORN DIRT, GRIT, STAINS, PET ODOUR, ALLERGENS... BE GONE!



NOTICE OF AGM

Omeo Golf Club will hold their
AGM earlier than previously.
Wednesday 9th October
Following twilight golf, 7pm.

See you there!



**Omeo Rodeo
AGM.**

23/10/2024 at

7pm at

The Hub, Omeo.

All welcome.



**Daily Services between
Melbourne - Bairnsdale - Omeo**
Bairnsdale Depot - Grinters Transport,
 16 Lawless Street, Bairnsdale, 3875
Melbourne Depot - Vic Freight Specialists, 13B,
 13-17 Progress Street, Dandenong, 3175
Omeo Depot – Omeo Welding & Engineering &
 Equipment Hire, 87 Bilton Street, Omeo, 3898
 Phone: (03) 5152 5778 Fax: (03) 5152 3329
 Mobile: 0418 516 857 Email:
 admin@grinters.com.au
 Pallets . Parcels .
 ♦ Livestock . Hay .
 ♦ Machinery . Bulk
 ♦ General . Wool
 ♦ Refrigerated Freight . Farm Equipment
Leaves 9.30am from Bairnsdale to Omeo



Jens and Maureen Hudson

18 Great Alpine Road Lucknow 3875
 Phone : Maureen 0402 001 593
 Jens 0402 006 268

Many fabrics to choose from for all your
 furnishing needs Over thirty years in
 Business and 76 years' experience in the
 industry, between us we can help you.

Including car and motorbike seats

- Car roof linings replaced
- Cushions made to size
- Foam cut to size
- Toyota Land Cruiser seat foams



- Groceries
- Meat
- Fruit & Veg
- Gas Bottles
- Bottle Shop
- Post Office
- Fuel ULP & DSL + Winter Mix
- Breakfast & Lunch Daily until 2pm
- Fish & Chips - Friday Nights 4pm-7pm
- Eat In or Take Away
- Personalised Weekly Orders of Meat, Fruit & Vegetables

Drop in and meet our awesome team to grab a
 bite to eat or stock up on supplies for your
 adventure around Sunny Benambra

TRADING HOURS

Weekdays 8am - 5:30pm
 Weekends 9am - 5pm
 Public Holidays 9am - 5pm

03 5159 9209



Bore pumps Sales and servicing,
 Mains and solar operated

TV Installation and servicing of both
 Satellite & "Terry"

Generator - Sales/Hire/Installation/

Mains to Generator
 changeover switches and inlets

Electrical Appliance Repairs/Maintenance

Electrical Installations
 Industrial to domestic..

Competitive rates
 and servicing the Omeo region

Contact Jeremiah on 0418 909 978

**Switch all
paper
products in
your life to
100% recycled**



Did You Know?

Toilet paper, printing paper and almost all other paper products are available as recycled options.

For more information contact Council or visit our A – Z - Where to next? on our website.



**EAST GIPPSLAND
SHIRE LIBRARIES**



LEGO Club 2024



Junior LEGO enthusiasts are invited to attend our after- LEGO Club school sessions.

The sessions incorporate freestyle activity and themed construction activities.

Donations Welcome

The library will gladly accept donations of old or new LEGO brand pieces for our LEGO Club collection.

For more information, phone **51524225** or ask in person at the library about these **FREE** sessions.

Omeo Service Centre

3.30pm-4.30pm

Every Wednesday

Except School Holidays



All Children must be accompanied by an adult

ALL SCREENS GIPPSLAND
SALES - SERVICE - REPAIRS

**GLASS & GLAZING –
WINDOW REPLACEMENTS**

– SHOWER SCREENS – ROBE DOORS –
SECURITY DOORS – FLY SCREENS &
MORE

Servicing - Ensay, Swift Creek, Omeo,
Benambra & Dinner Plain

OFFICE: 5152 6791

JUSTIN: 0457 775 168

emailsales@allscreensgippsland.com.au

www.allscreensgippsland.com.au



Specialising in the following services

Potable Water Cartage

Transport of general freight, Agricultural goods,
Motorbikes, Quad bikes, Mowers
Small tractors, SXS's, Machinery parts,
Bagged grain and much more.

Reasonable rates

Truck equipped with 1,000 KG. tailgate loader

Full tarpaulin if required,

ability to load and unload goods
with 1.6 tonne all terrain pallet jack.

Truck capabilities: 6.tonne, 4x4

Tray size: 5.5 mtrs x 2.4 mtrs.

Flat top trailer 6.3 mtr x 2.5 mtr

Transporting weekly to Omeo and district
from Albury/Wodonga Corryong

Orders phoned or emailed by Tuesday
11 am For delivery on Wednesdays

Contact Mark for delivery charges on
0428 264 480

Mark @tectronix.com.au



Tech Savvy Workshop

Introduction to Android



Learn the basics of your Android device!

This workshop provides a basic introduction for those new to Android devices and will cover the following: What a tablet / smartphone is, what they can do, different brands / types, device buttons and controls, using the touch screen, navigating your device, and common symbols. It is suitable for tablet or smartphone users.

Disclaimer: This workshop is designed for those who are looking to get a device or who have just got one.



Libraries
Change Lives

Omeo Service Centre

Monday 21 October 9.30am-12.00pm

Book Now at your Library: 5152 4225



Tech Savvy Workshop

Introduction to Apple



Learn the basics of your Apple device!

This workshop provides a basic introduction for those new to Apple devices and will cover the following: What an iPad/iPhone is, what they can do, different types, device buttons/controls, using the touch screen, navigating your device, and common symbols. It is suitable for iPad or iPhone users.

Disclaimer: This workshop is designed for devices running iOS software but is not suitable for Apple Mac users. This workshop is designed for those who are considering purchasing or have recently acquired an Apple device.



Libraries
Change Lives

Omeo Service Centre

Monday 28 October 9.30am-12.00pm

Book Now at your Library: 5152 4225

NEW RUSH BREWHOUSE

Phone :5159 1276

Opening Hours

Friday from 5pm

Sunday Breakfast 8am 12pm

Sunday Lunch 12- 2pm



OMEO RSL

Notice of Annual General Meeting

Wednesday 6 November 2024

@ 11:00am, Omeo Shire Office

Nominations for Committee members
are now open

All positions will be declared vacant

New Service and Affiliate Members
are most welcome

For general enquiries contact
Renee on 0468 499 295



The Omeo & District Agricultural & Pastoral Society Inc. invites you to attend



Floral Art & Cookery Workshops

All welcome to this fun and free event

Are you exhibiting in an Agricultural Show this year? Do you want to find out what the judges are looking for? Learn and share some tips and tricks on how to present the best bunch of flowers and/or how to prepare and present your cookery items so they taste the best.

Our guest speakers are Show Judges and Show enthusiasts, Judi Sykes and Maree Campbell as well as our local ladies. Bring some foliage (on Wednesday) or a jam & cookery item (on Saturday) for discussion, feedback and fun. All other equipment supplied.



Floral Art Workshop

Wednesday 16th October *NOTE CHANGE OF DATE* 12:00pm – 4:30pm *

To be held at the Omeo Recreation Reserve Pavilion

&

Cookery, Preserves & Jams Workshop

Saturday 26th October 12:00pm – 4:30pm

To be held at the Omeo Recreation Reserve Pavilion



Lunch Included. Registration & information: Lisa Lee, ODAPS Secretary E: omeoshowsec@gmail.com P: 0499 192 722
www.omeoshow.com.au Facebook: Omeo Show 2024. Hosted by the Omeo & District Agricultural & Pastoral Society and supported by the Foundation for Rural & Regional Renewal/FRRR & the Omeo Garden Club.



SWIFTS CREEK BUSH NURSING CENTRE INC.

ABN: 78 513 040 891 INCORPORATION No A0011271F

ANNUAL GENERAL MEETING

When: Wednesday 9th October 2024 @ 5.30pm

Where: Interested parties may participate in the AGM in person at the Swifts Creek Bush Nurse Centre or Via video

conference on Zoom. If you require the Zoom link please contact the centre.

Committee members for renomination

Pauline Canfield -renominating

Michael Cawley -renominating

Committee member vacancies:

No vacancies at this time

RSVP please Contact: Bush Nursing Centre: 03 5159 4210 or the

SCBNC email: Secretary.scbnc@gmail.com for access to the Zoom link.

FLYCO GIPPSLAND

SICK OF THOSE ANNOYING FLIES & SPIDERS HANGING AROUND YOUR HOME OR BUSINESS? LET US GET RID OF THEM FOR YOU!

WE ARE COMING YOUR WAY... VISITING ENSAY, SWIFTS CREEK, OMEO, BENAMBRA AND EVERY WHERE IN BETWEEN.

MONDAY 28/10 TO FRIDAY 1/11/24

To book call 1300 88 44 22



Locally owned & operated where customer service & satisfaction are our highest priority



PHYSIOTHERAPIST

Robert Hughes is a qualified and extremely experienced Physiotherapist from McMillan Chiropractic

Robert will be available at Swifts Creek Bush Nursing Centre 16th October & 13th November 2024

FOR APPOINTMENTS Please phone 5150 2430 NO GP Referral required.



SWIFTS CREEK BUSH NURSING CENTRE

T. 03 5150 2430 F. 03 5150 2439
Email. susan.carroll@gha.net.au

17 McMillan Street, Swifts Creek 3896
Open 9am until 5pm Monday to Friday
9am until 11am Weekends

Emergency on-call available after hours
Nursing services: No appointment required.

You are required to pay an annual membership fee or otherwise a non-member fee.

A Rural and Isolated Practice Nurse is available for wound infections.

Assistance with Virtual Emergency consults.

Pathology: Every Weekday, 9am until 9.45am

Women's Health

Ante/Postnatal Care

Suturing

Memberships

Family \$140, Single \$70 due 31st July each year

Hire of Equipment

Home visits if required.

24hr Bp monitor

Immunisations

Webpage – [https://](https://www.swiftscreekbushnursingcentre.com.au)

www.swiftscreekbushnursingcentre.com.au



Ensay Bush Nursing Centre

T. 03 5150 2416 F. 03 5150 2419

email: ensaybnc@gha.net.au



Open 9am until 3pm Monday to Friday

or 8.30am-9am and 3-3.30pm emergencies only

Nursing services: No cost No appointment required.

Pathology Monday to Friday 9 am until 10.30 am- No cost. No appointment required

Footcare: Approximately 6 weekly, \$15.00 cost ring for an appointment

Walk and morning tea: 1st Friday of each month may include some craft activities, no cost only delicious homemade cakes etc.

RFDS mental wellbeing: Fortnightly face to face and telehealth model.

Memberships: \$50.00 family and \$25.00 single due 31st of July each year, pro-rata payments accepted for new members.

AGM: Occurs on the second Monday of October all welcome, new members to the COM welcome.

Follow us on facebook and our webpage for events and employment opportunities.

WEBPAGE

<https://www.ensaybushnursing.com.au>

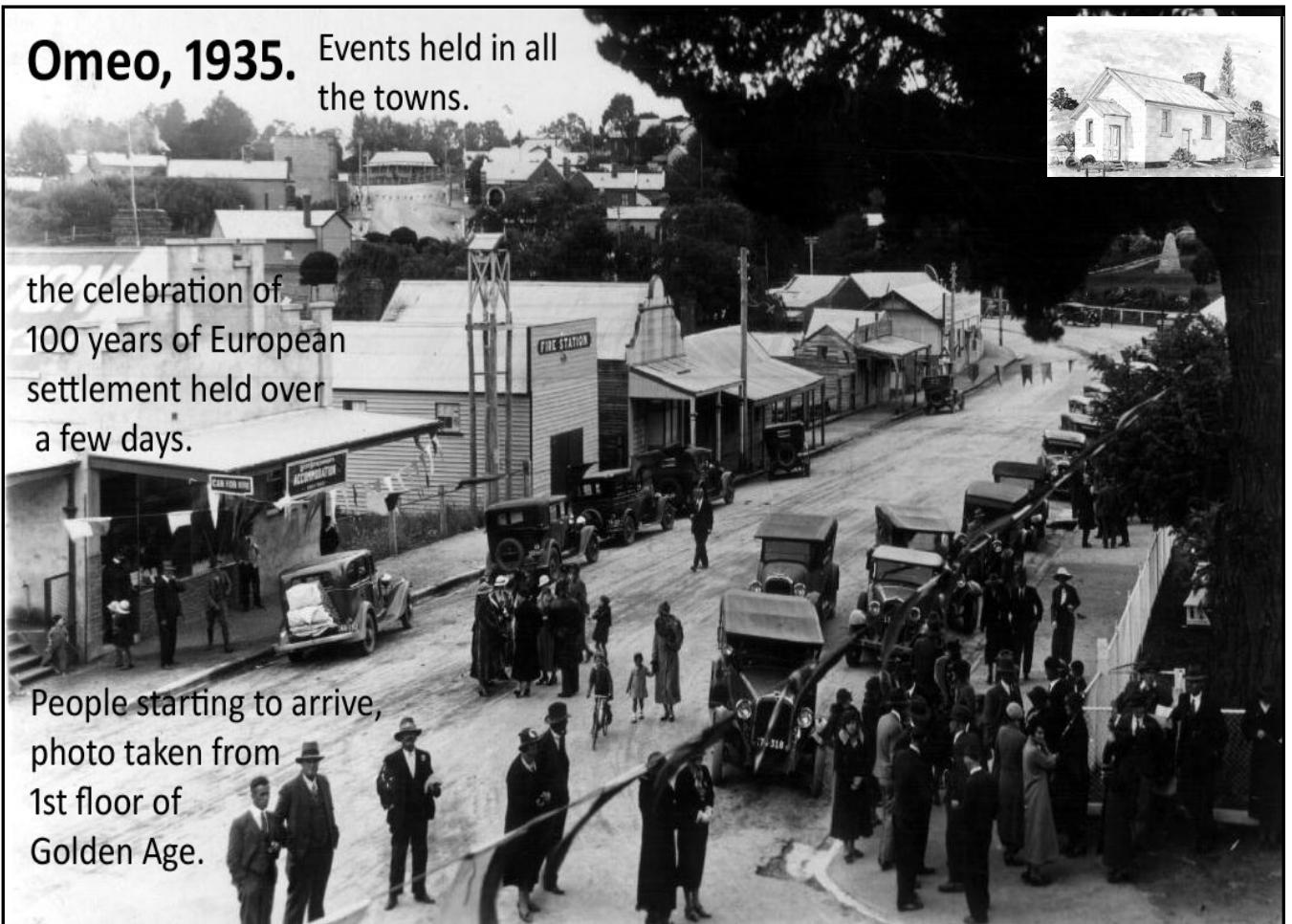
**5 Great Alpine Road
Ensay, VIC. 3895**

Omeo, 1935. Events held in all the towns.



the celebration of 100 years of European settlement held over a few days.

People starting to arrive, photo taken from 1st floor of Golden Age.



Golf Club Results Sunday 6/10/2024



18-hole stableford

Open to all members & casuals welcome

12.30pm for 1pm hit off.....*same next Sunday 13/10/2024*

| <u>Place</u> | <u>Points</u> | <u>Player Name</u> |
|---------------------|----------------------|---------------------------|
| Winner | 33 | Dean Jobling |
| 2 nd | 30 | Pat McCormack |
| 3 rd | 29 | John Reid |
| NAGA | 19 | Walter Bower |

Nearest to Pin 7th



Steve Thomas

Nearest to Pin 16th

-

Nearest to Pin 2nd shot 6th/15th

Dean Jobling

AGM Wednesday 9th October 7pm after Twilight Golf

Thank you to everyone who was able to attend my 90th birthday party and helped make it a huge success. I am very grateful for all the birthday wishes and presents I received. A big thank you to Carol, Sharna, Brylee, and Anette for all their help and to Kaila for my beautiful cake.



Country Women's Association of Victoria Inc.
High Country Branch

2025 Scholarship

The branch is proud to announce the High Country Branch \$3000 Scholarship to assist with ongoing education.

Eligible applicants will be year 10 and above school leavers from the local community.

You can request further information and an application form by contacting:

Rev. Marian Bisset
0421 067 212

or by contacting the branch through social media.

Applications due: 21st October, 2024

 [cwahighcountry](https://www.facebook.com/cwahighcountry)



WOODLANDS FIREWORKS MONDAY, 4 NOVEMBER 2024

HOLLONDS/O'BRIENS ROAD, SWIFTS CREEK - 5KM NORTH OF SWIFTS CREEK

FREE ENTRY / LIVE MUSIC / PARKING AND CAMPING ONSITE

CATERING BY SWIFTS CREEK FOOTBALL AND NETBALL CLUB



*You're
invited*

Please join us to celebrate the launch of
Study Hub Omeo

A site of the Gippsland East Study Hub Outreach.
A partnership between the
Gippsland east Local Learning and Employment Network
And the Omeo Community Hub and Hall

9 October 2024, 12:00pm
179 Day Avenue
Omeo



Please RSVP
By 7 October 2024
Via the QR code or at
<https://www.trybookong.com/CVPB>



Now on Saturdays

HARVEST EXCHANGE CALENDAR 2024-2025



| 2024 | |
|---|---|
| SATURDAY 5 OCTOBER ENSAY Little River Inn | SATURDAY 19 OCTOBER SWIFTS CREEK Community Centre |
| SATURDAY 2 NOVEMBER OMEO Courthouse Gardens | SATURDAY 16 NOVEMBER BENAMBRA Neighbourhood House |
| SATURDAY 30 NOVEMBER ENSAY Little River Inn | SATURDAY 14 DECEMBER SWIFTS CREEK Community Centre |
| 2025 | |
| SATURDAY 18 JANUARY OMEO Court House Gardens | SATURDAY 1 FEBRUARY BENAMBRA Neighbourhood House |
| SATURDAY 15 FEBRUARY ENSAY Little River Inn | SATURDAY 1 MARCH SWIFTS CREEK Community Centre |
| SATURDAY 15 MARCH OMEO Court House Gardens | SATURDAY 29 MARCH BENAMBRA Neighbourhood House |
| SATURDAY 5 APRIL ENSAY Little River Inn | SATURDAY 19 APRIL SWIFTS CREEK Community Centre |
| SATURDAY 3 MAY OMEO Court House Gardens | SATURDAY 17 MAY BENAMBRA Neighbourhood House |

SATURDAYS AS PER TIMETABLE

10:30am - Register Produce

Register your produce
and place it on the table

11am - Swap and share
Take what you like, share
and chat

11:30am - Excess for Everyone

Leftover produce is
shared around or taken
home

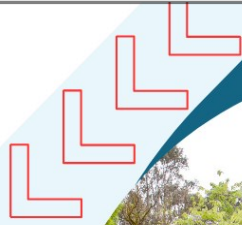
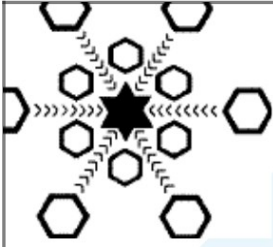
WHAT TO BRING

Fresh fruit and veges,
eggs, honey, homemade
preserves, baked goods,
seedlings, empty jam jars,
empty egg cartons, your
favourite recipe or
gardening tips.

Nothing to bring?
Come along anyway....
Growers love to share!

See the Harvest Exchange Guidelines here: <http://tinyurl.com/HarvestExchange> or
contact the Community Centre Swifts Creek for more info:

E: ccswiftscreek@gmail.com T: 0491 697 298



150th Celebrations

1874-2024

**SWIFTS CREEK P-12
FLAGSTAFF CAMPUS**

**NOVEMBER 9TH 2024
10-2PM**

COME CELEBRATE WITH US

SHARE YOUR STORIES ON
OUR LIVE PODCAST

swifts.creek.pl2@education.vic.gov.au

Cassilis Makers Market

School Tours & Historical Displays

Picnic Marquee Lunch provided

Kids Entertainment

Ceremonial Tree Planting

Celebratory Cake Cutting



Congratulations Grace, Luke, Lorinda & Demi.

Here's another reason to get your exhibits ready for the 2024 Omeo & District Show on the 15th, 16th & 17th of November. Four Omeo & District Show exhibitors and their exhibits made it to the Royal Melbourne Show and Victorian Agricultural Show (VAS) Convention judging!

One local was most thrilled to have won the **Victorian Carrot Cake Competition**. Omeo's own Mrs Grace Fitzgerald entered the VAS Carrot Cake Competition at the 2023 Omeo Show and after winning there, she baked another cake for the Gippsland Group judging then baked again for State judging in 2024 WHICH GRACE WON! There is now, no doubting Grace's abilities !

Grace told us "I am proud to have received this award. I didn't expect it at all. I do a lot of cooking for our shearers and now they will probably expect a Carrot Cake for smoko! I enjoy being part of Agricultural Shows as they provide a place for us to share our skills and expertise".



The **Junior Carrot & Date Muffins State Finalist Luke Bowd**, placed **second** Luke is a regular entrant at the Omeo & District Show and like Grace, had to bake over and over again to get that far.

Lorinda Whittington's sewing and Demi King's photograph both made it to the 2024 Royal Melbourne Show for judging against other Show winners. Whilst they did not win, their exhibits were on display for all to see. Well done!

This is no mean feat considering that they've all competed against dozens at the local level, 60 at the Gippsland Level then many Victorian finalists.

Keep an eye out for the VAS categories at our show this year. You too could be headed for the Royal Melbourne Show or the VAS Convention.

There are also hundreds of other classes to enter and have a bit of fun at.

Our Gippsland Agricultural Shows start soon with:

- Maffra Show on October 25-27,
- Sale Show on November 1-3,
- Bairnsdale Show on November 9,
- Omeo & District Show on November 15-17**
- Yarram Show on November 23-24 and
- Orbost Show on March 10, 2025.



Head to www.omeoshow.com.au to download your Omeo & District Show Schedule or grab a copy at a local shop.



HEY HEY



IT'S SATURDAY...

16TH NOVEMBER 2024!

OMEO & DISTRICT SHOW

Quick Shears Friday 15th

... extra horse events on Sunday 17th

For all the details go to:

- www.omeoshow.com.au
- Showdayonline.com /Omeo



For lodging Main Pavilion entries:

- 5-7 pm Wed 13th & Thurs 14th, 10am-3pm Friday 15th
Skip the entry paperwork queues - enter & pay on-line first.
- Judging of Pavilion entries starts 5pm Friday 15th



Another great Show coming up for Omeo & District.
Help make it terrific - be a part of it,



Queries? Contact Lisa Lee Secretary omeoshowsec@gmail.com 0499 192 722

Ad 6/10/24